



1 Duchess Close, Strood, Rochester, Kent, ME2 3TX

draft details.

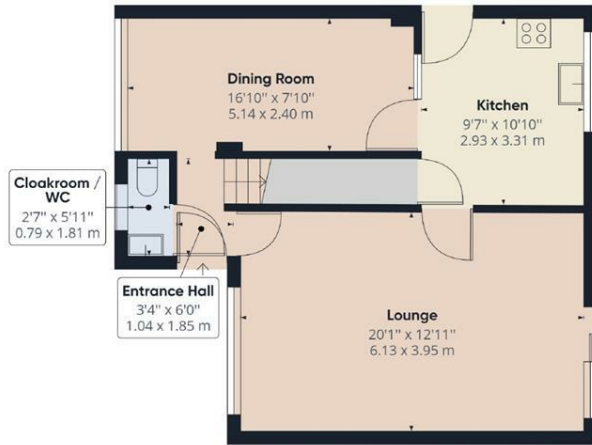
STUNNING THROUGHOUT**EXTENDED**GARAGE**LANDSCAPED GARDEN**RESIN DRIVE AND PATIO**SOUGHT AFTER LOCATION

The stunning 4 bedroom extended house in the the sought after "Rede Court Road" area has just become available to the sales market. This property has been recently refurbished boasting a modern new fitted kitchen, with tasteful decor throughout. Accommodation comprises of entrance hall, spacious large lounge, modern fitted high gloss kitchen, a separate dining room and a hand downstairs cloakroom/wc. To the first floor there are 4 bedrooms with bespoke wardrobes to the master and a neutral family bathroom. Added benefits include gas central heating, double glazed windows, a garage , landscaped rear garden with a resin patio and a resin drive to front for providing parking. Duchess Close is a quiet cul-de-sac, just off of the popular Rede Court Road area. This property is conveniently located with easy access to local schools, shops and motorway links and viewings are an absolute essential.

Council Tax Band E

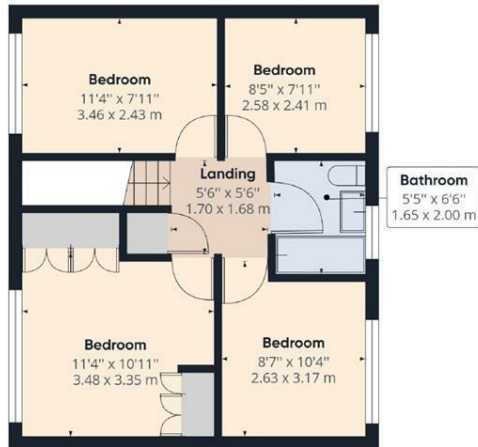
£525,000

- 4 BEDROOMS
- 2 RECEPTIONS ROOMS
- GARAGE
- LANDSCAPED GARDEN
- RESIN PATIO & DRIVE
- EXTENDED
- REFURBISHED
- MODERN HIGH GLOSS KITCHEN
- POPULAR LOCATION



Ground Floor Building 1

Approximate total area⁽¹⁾
1029.69 ft²
95.66 m²



Floor 1 Building 1

(1) Excluding balconies and terraces

While every attempt has been made to ensure accuracy, all measurements are approximate, not to scale. This floor plan is for illustrative purposes only.

GIRAFFE 360

